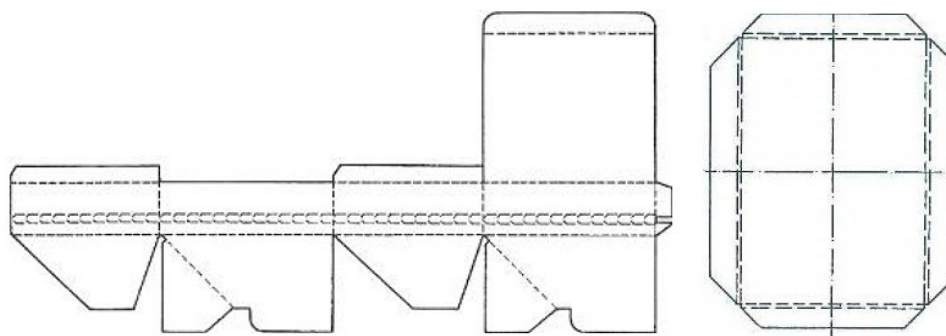




**YOUR SPECIALIST
FOR SPECIALISED MACHINES
MSB GmbH & Co.KG**



**Sample Making Press for Punching, Grooving, Scoring, Perforating and Cutting
MHP 1400 and MHP 1600**



MSB GMBH & CO.KG



**YOUR SPECIALIST
FOR SPECIALISED MACHINES
MSB GmbH & Co.KG**



Sample Making Press for Punching, Grooving, Scoring, Perforating and Cutting MHP 1400 and MHP 1600

The pattern-manufacturing press is ideally suited for the rapid production and modification of Exact original patterns from cardboard, corrugated board and paper with offset groove lines and small series.

The setup and changeover takes seconds and is an advantage of our pattern-manufacturing press as a complement to the modern plotter. Save as in the production of small series and patterns of time and money.

Furthermore, the added value of the sophisticated and robust design, their benefits mainly from its ease of use (easy and convenient), the crashworthiness pulls (no electrical or rotating parts), the probability-maintenance friend and a small footprint.

Especially in today's time is our pattern-manufacturing press, in combination with a plotter, a perfect machine to customer-specific requirements to implement quickly and accurately and to give the customer so after a short time a modified pattern according to his ideas at hand. It is since 1985 successfully deployed and is constantly being developed and improved by our engineers and technicians.

The pattern-manufacturing press is linearly fitted with creasing, perforating and cutting lines of your choice, and provided with a steel bar, a fixed side fence with steel tape and with depth gauge, front and rear.

A lateral and depth-adjustable front and rear stop and a storage and additional steel bars can be supplied as an optional accessory

Power is transmitted via a foot pedal by muscle power (for a force of 300 N be reached about 5000 N).

Technical data:	MHP 1400	MHP 1600
Working width:	1400 mm	1600 mm
Clear distance between columns:	1490 mm	1690 mm
Overall width:	1720 mm	1920 mm
Height:	1125 mm	1125 mm
Depth:	1330 mm	1330 mm
Footprint:	2.5 x 2 m	2.5 x 2 m